



# ASSISTIVE TECHNOLOGY TO SUPPORT INDEPENDENCE

CLARENMORE Day & RESIDENTIAL SERVICES,  
GALWAY CITY ( Brothers of Charity West.)

Hugh O' Donnell, MSc (Econ )  
Area Manager

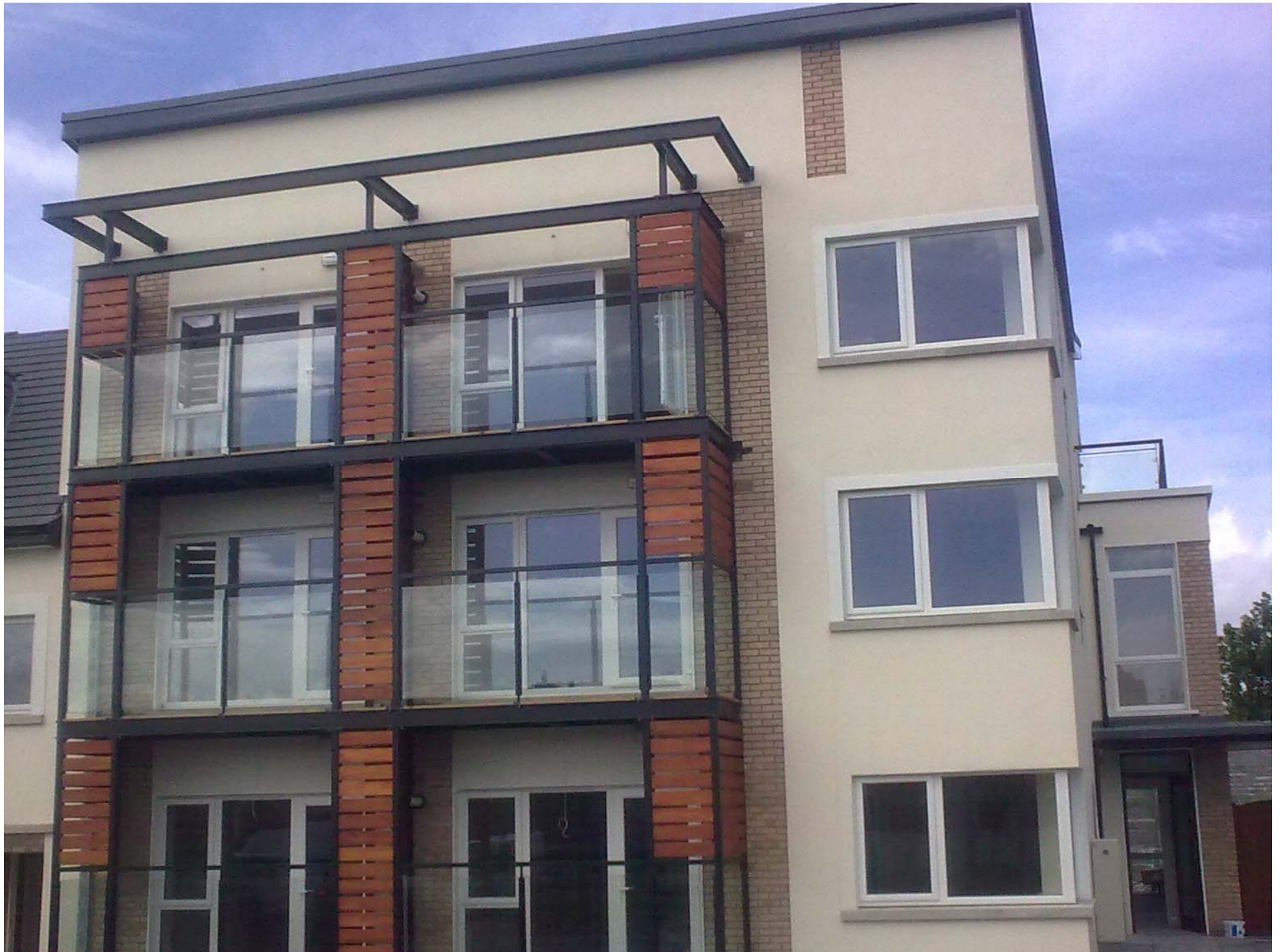


# SMART LIVING

- New gadgets are often described as 'smart'. But in housing 'smart' describes advanced technological systems designed to support individuals to live more independent lives.
- Two main areas ; Telecare and Telemedicine

# NEW DEVELOPMENT

- PILOT OF ASSISTIVE TECHNOLOGY
- SIX ONE BED APARTMENTS IN KNOCKNACARRA, SALTHILL
- FUNDED BY DEPT OF ENVIROMENT
- LANDLORD - PETER TRIEST HOUSING



# QUALITY ASSURANCE SYSTEM (CQL)

PERSON CENTRED PLANS  
HIGHLIGHTED:-

1. UNHAPPY IN PRESENT  
ACCOMMODATION
2. NO PRIVACY
3. LIMITED INDEPENDENCE
4. LIMITED SPACE FOR INTIMACY WITH  
FAMILY AND FRIENDS

# PLACEMENT RISKS

- MEDICAL NEEDS & CONDITIONS
- HEALTH & SAFETY CONCERNS
- COPING SKILLS & ABILITIES
- PARENTS & FAMILIES

# BELFAST VISIT

- VISIT TO SOCIAL HOUSING SCHEME FOR INDIVIDUALS WITH SEVERE PHYSICAL DISABILITIES
- CONSISTED OF 12 X ONE BED APARTMENTS
- UNITS HAD BEEN ADAPTED AND FITTED WITH ELECTRONIC ASSISTIVE TECHNOLOGY ('SMART HOUSING')

# FOLD TELECARE

- FOLD TELECARE ARE ONE OF THE MAIN PROVIDERS OF ASSISTIVE TECHNOLOGY IN IRELAND.
- PROVIDE A 24 HOUR MONITORING SERVICE
- WE ARE PRESENTLY USING THEIR TECHNOLOGY, WITH GREAT SUCCESS



# ASSESSMENT OF NEED

- FOLD TELECARE DEMONSTRATED TECHNOLOGY AVAILABLE TO TEAM
- UNDERTOOK SITE VISIT TO ASSESS TECHNOLOGY REQUIREMENTS
- ADVISED ON MOST SUITABLE PACKAGE BASED ON INDIVIDUAL NEEDS

# INDIVIDUAL TAILORED PACKAGE

- BASED ON INDIVIDUAL PROFILE & RISK ASSESSMENT OF NEED
- SELECTED AND INSTALLED THE MOST SUITABLE EQUIPMENT
- INITIALLY WE WILL MONITOR THE SYSTEM IN HOUSE

# ASSOCIATED COSTS

- COST OF INITIAL INSTALLATION & EQUIPMENT FOR SIX UNITS  
= € 10,500
- MAINTENANCE COSTS PER YEAR =  
€1,000 - €1,500 COVERS FOR ALL  
UNITS ( Depending on package)

# TELECARE PRODUCTS

- PERSONAL TRIGGER
- FALL DETECTOR
- BED & CHAIR OCCUPANCY SENSOR
- BOGUS CALL BUTTON
- MOVEMENT DETECTOR
- SMOKE DETECTOR & HEAT SENSORS
- CO2 DETECTOR
- FLOOD SENSOR

# EXPECTED OUTCOMES OF ASSISTIVE TECHNOLOGY

- ACHIEVING PERSONAL OUTCOMES FOR INDIVIDUALS
- PROVIDES FOR HEALTH & SAFETY CONCERNS
- REDUCE STAFFING COSTS
- GREATER INDEPENDENCE & AUTONOMY

# EVALUATION

- EVALUATE BENEFITS & DEFICIENCIES
- ASSESS STAFFING REQUIREMENTS AND COSTS ON AN ONGOING BASIS
- ESTABLISH LINKS AND SHARE INFORMATION WITH OTHER SERVICE PROVIDERS, UNIVERSITIES AND TECHNOLOGY COMPANIES.

# FUTURE PLANS

- WE AIM TO HAVE ALL OUR RESIDENTIAL SERVICES ASSESSED
- UPGRADE ACCOMMODATION AS REQUIRED
- MOVE FROM GROUP HOMES TO MORE INDIVIDUALISED SETTINGS
- DEVELOP NEW SOLUTIONS TO SUPPORT INDEPENDENCE

# CONCLUSION

- IF ASSISTIVE TECHNOLOGY CAN;
- MEET REQUIRED OUTCOMES
- REDUCE NUMBERS IN GROUP HOMES
- PROVIDE SAFER ACCOMODATION
- REDUCE STAFF COSTS
  - ITS WORTH IT !



■ THANK YOU FOR YOUR ATTENTION