

Regulation of Designated Centres for Persons (Children and Adults) with Disabilities

**Information for providers and persons
participating in the management of centres**

Health Information and Quality Authority

Overview

- The legal framework:
 - The Health Act 2007
 - Care and Support Regulations
 - Registration Regulations
 - The National Standards

The Health Act 2007

Overview of key sections for providers
and managers

Overview of key sections

Part 1: Preliminary Matters:

What constitutes a Designated Centre?

Part 7: Office of the Chief Inspector of
Social Services

Part 8: Regulation of Designated Centres

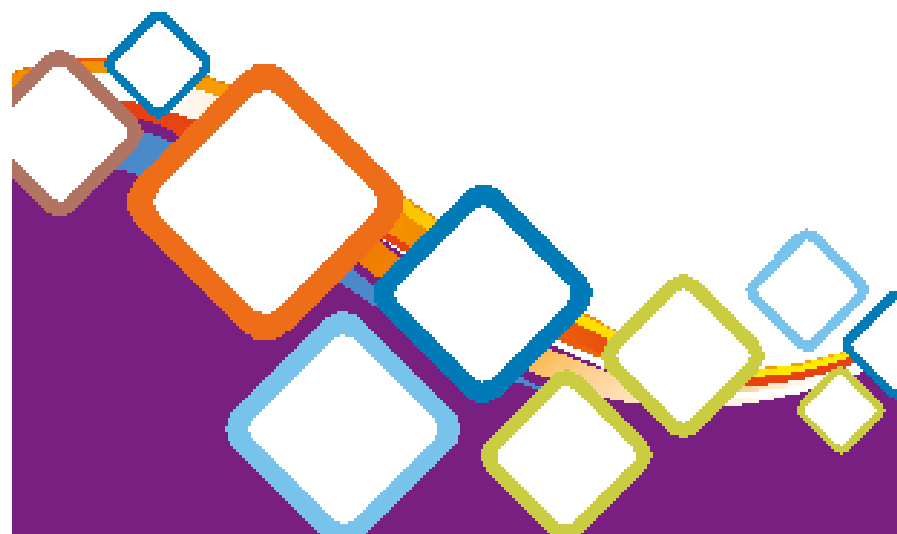
Part 9: Inspections and Investigations

Part 10: Offences

What constitutes a Designated Centre?

What constitutes a designated centre for people with disabilities?

Guidance for provider organisations
October 2013



What constitutes a Designated Centre?

- What is the statutory definition of a designated centre?
- What are the criteria for identifying a designated centre for people with disabilities?
- What is an institution?
- What are residential services?
- How to check if you are operating a designated centre
- Registration of combined residential services as a single designated centre
- What services are not designated centres

Part 7: Functions - Office of the Chief Inspector of Social Services (Section 41)

- Maintain a **register** of designated centres
- **Register, monitor** and **inspect** designated centres
- Take **enforcement action** to protect people using these services

Part 8: Regulation of Designated Centres

(Section 46 – Section 69)

- Is concerned with the regulation of designated centres and sets down the requirements for registration and regulation of designated centres

Part 9

Inspections and Investigations

Part 10

Offences

Section 79: Prosecution of Offences

Prosecution may take place if a person operates a centre without registration, or if they fail to discharge their duties under a provision of the Regulations.

Standards and Regulations

National Standards for Residential Services for Children and Adults with Disabilities

January 2013



 Health
Information
and Quality
Authority
An tSúdarás Um Fhaisnéis
agus Cáilíocht Sláinte

Safer Better Care

Regulations

- **Regulations are statutory instruments which are enacted by the primary legislation and must be complied with.**
 - Department of Health draws up the Regulations
 - The Authority is the statutory body with responsibility for regulating them.

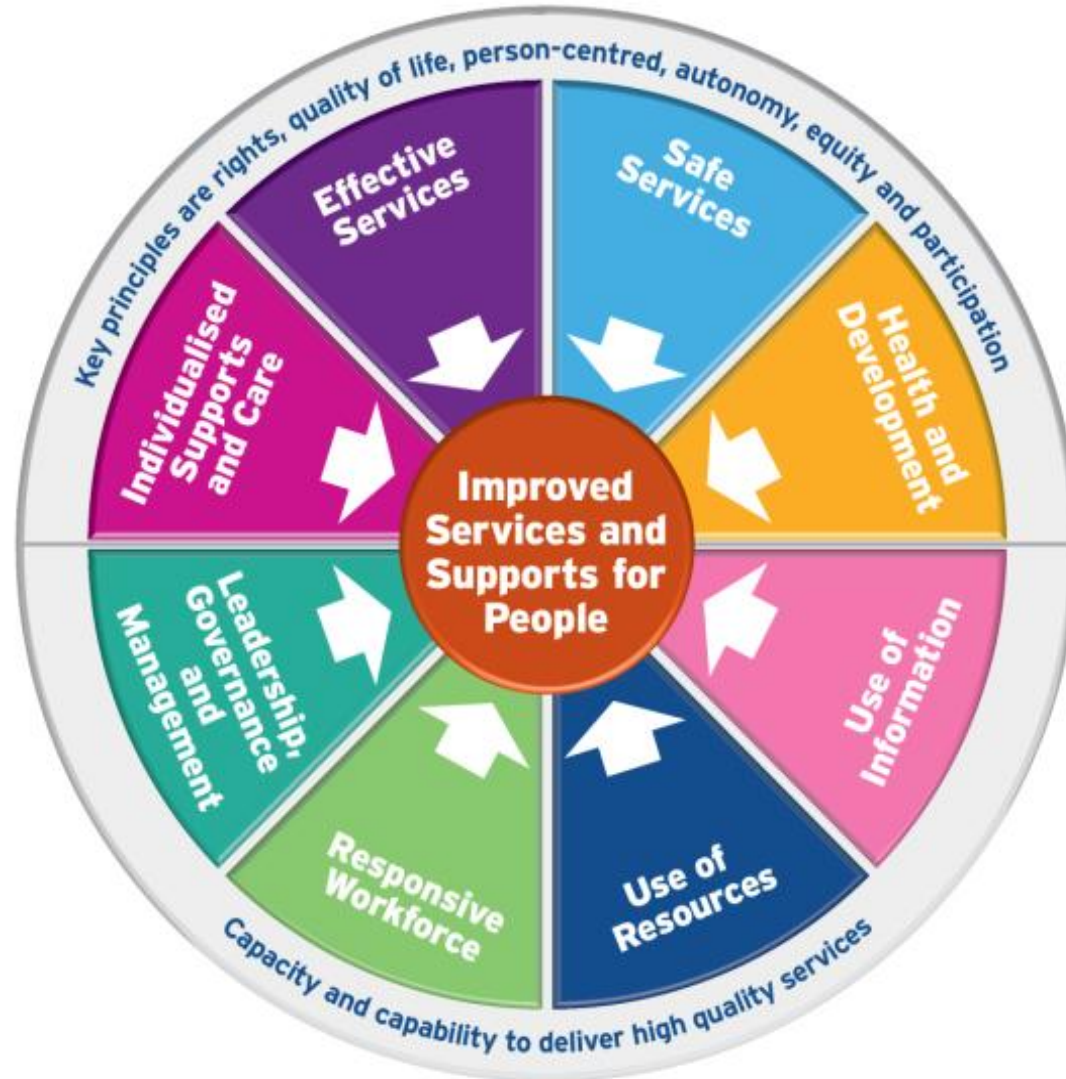
There are two sets of Regulations

- Health Act 2007 (Registration of Designated Centres for Persons (Children and Adults) with Disabilities) Regulations 2013
- Health Act 2007 (Care and Support of Residents in Designated Centres for Persons (Children and Adults) with Disabilities) Regulations 2013

Standards

- **Standards - person-centred, based on evidence and good practice**
 - The Authority is the statutory body with responsibility for setting standards for health and social care services, and monitoring how standards are being met.

Structure of the Standards



Commencement of the regulation of Residential Services for Children and Adults with Disabilities

- The date of commencement is determined by the Minister for Health
- As and from the date of commencement residential centres for persons with disabilities are subject to regulation by the Health Information and Quality Authority in accordance with the Health Act 2007, as amended.

Questions & Answers