


Why Families Want Change

A faint, stylized illustration of a balance scale is visible in the background. The scale is tilted, with the right pan hanging lower than the left pan. The entire image has a dark blue gradient background.

Avril Webster

April 2013

Why we need to change

- Time for change
 - Change relationship between families and
 - Service providers
 - HSE
 - Government
 - Influence change in our communities
- 

My story

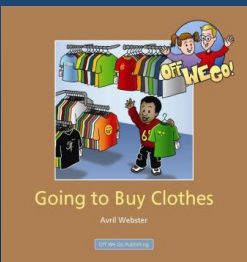
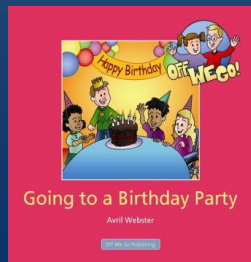
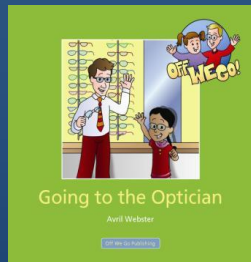








"Off We Go!" series



www.offwego.ie

About me



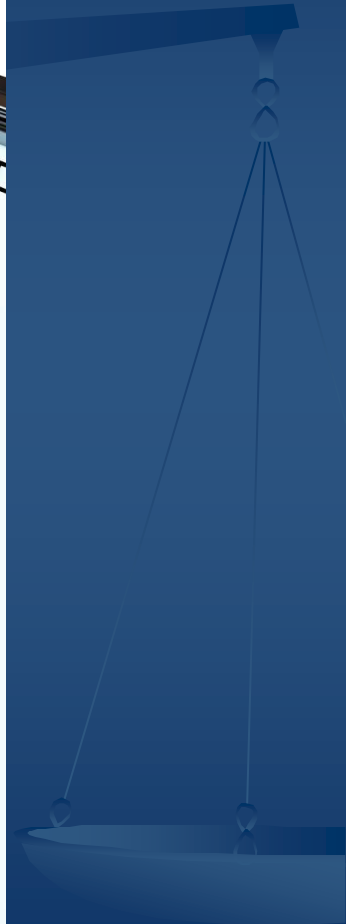
INCLUSION IRELAND
National Association for People
with an Intellectual Disability



Understanding
chromosome
disorders

Unique

Time for change

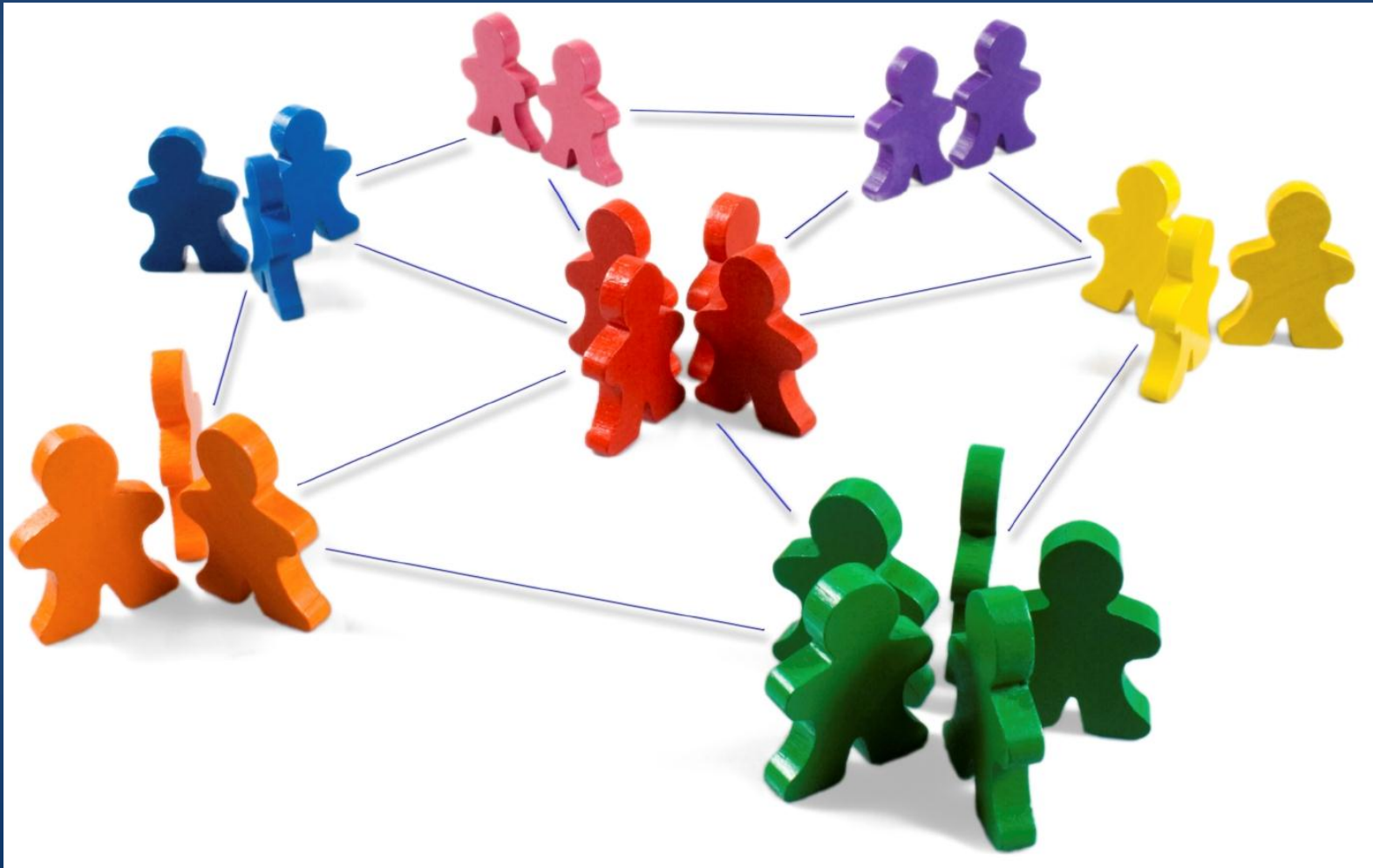


Changing with the times

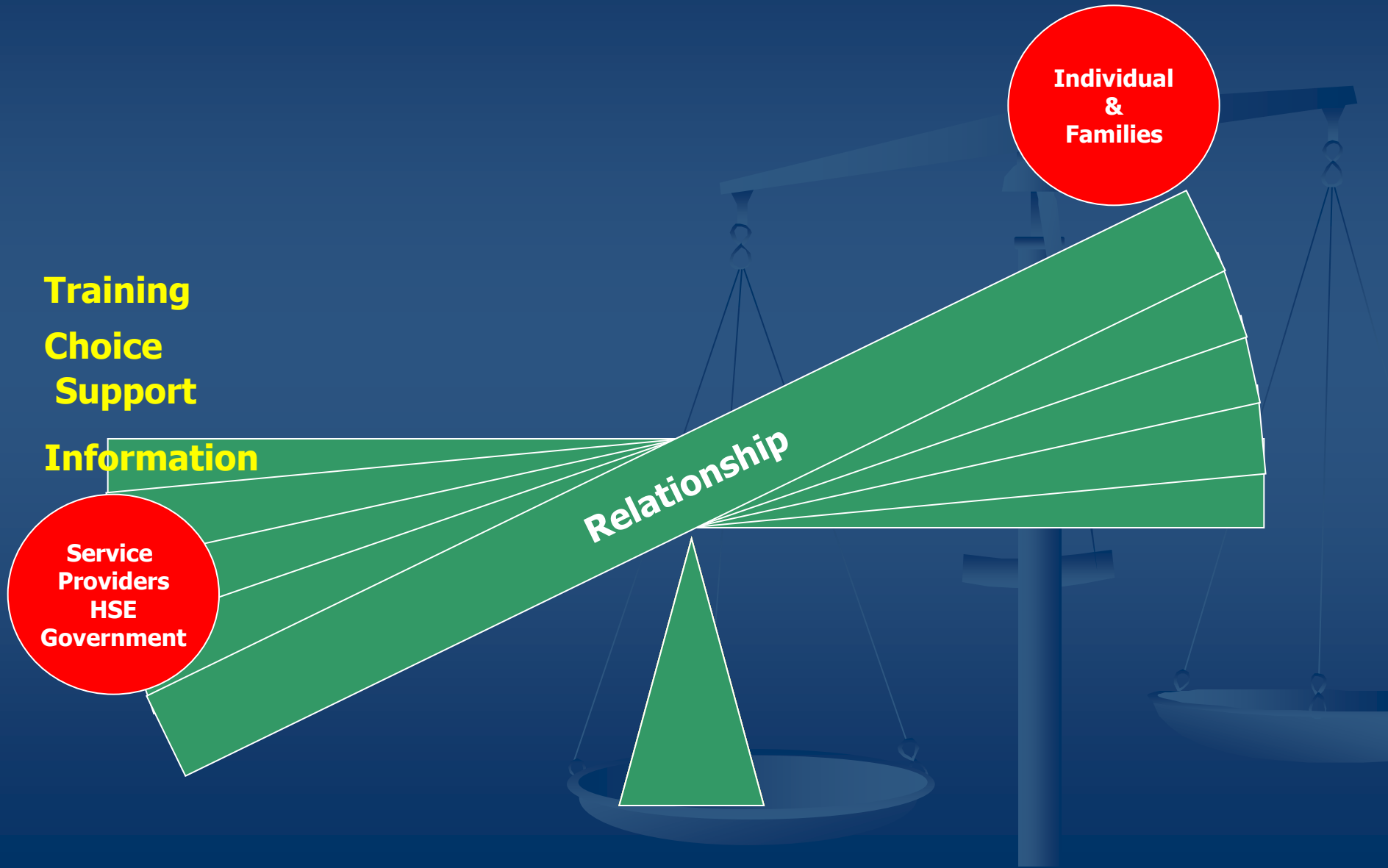




Change the relationship



Shifting the balance





all

different

all

equal

Influence change in our communities



Overcoming constant negativity



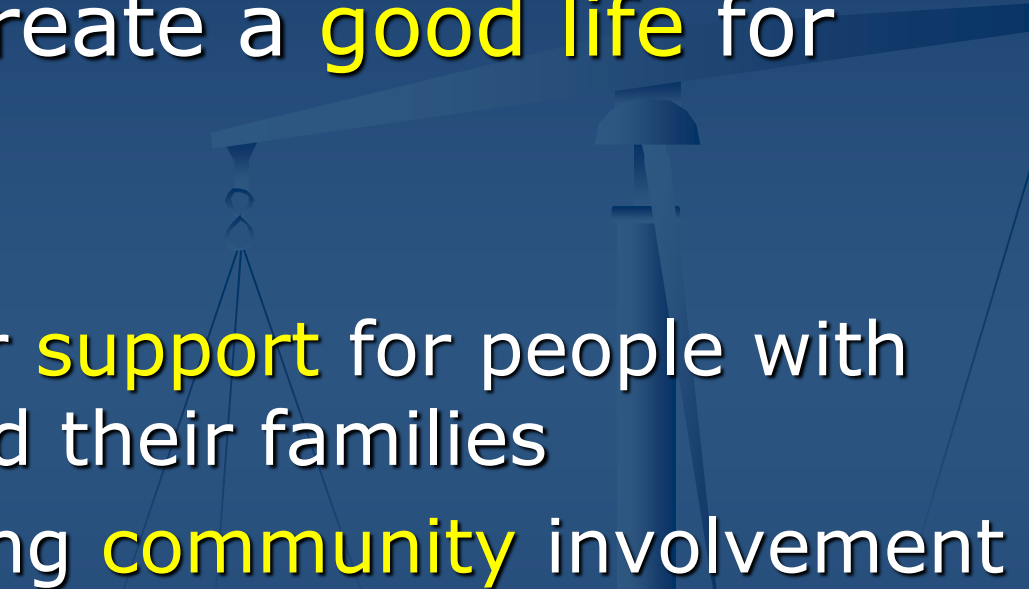
Community understanding







Questions for this week

- How can we create a **good life** for Stephen?
 - offer **choice**
 - provide better **support** for people with disabilities and their families
 - establish strong **community** involvement
- 



Thank you for listening

Avril Webster
avril@offwego.ie