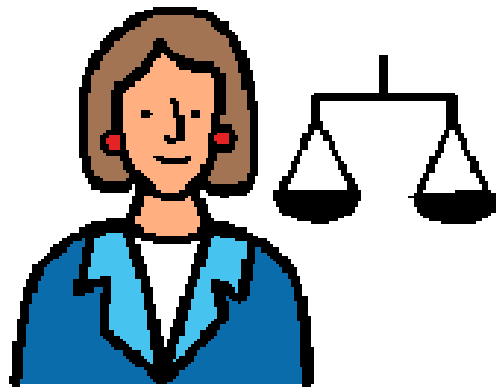


Value for Money and Policy Review of Disability Services in Ireland

Presentation to Immersion Event
22nd April 2013



Ann McGrane
Disability Services Unit
Department of Health

*Background



Review started in July 2009

Report published July 2012



*Scope of the review:

- Objectives of the disability services;
- Extent to which existing policies are consistent with delivery of those objectives;
- Assess sustainability of current policies and costs; and
- Propose the policy changes, if any, needed to ensure that overall objectives are delivered.

*Background continued...

*Two strands:



*A examination of the effectiveness and efficiency of the current disability services programme;

and

*A review of current policy in relation to HSE-funded disability services



* Limitations

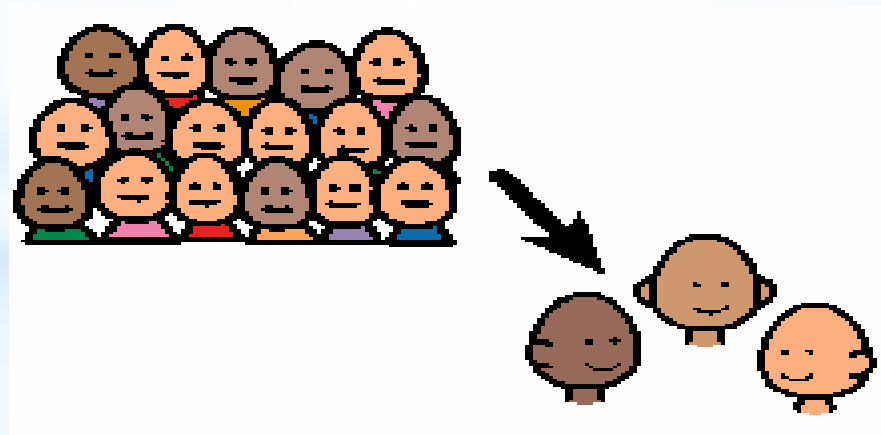
* It was difficult to look at all aspects of the disability services because of....

- The size & diversity of the sector;
- No common way of measuring outputs for some services;
- No common way of measuring outcomes;
- No common way of recording financial data;
- Practical difficulties experienced by some agencies in providing information to the review, despite their willingness to do so.



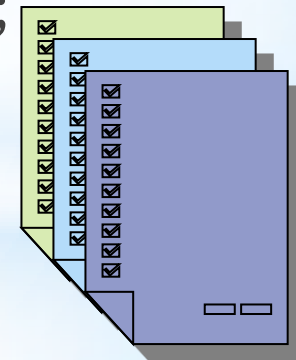
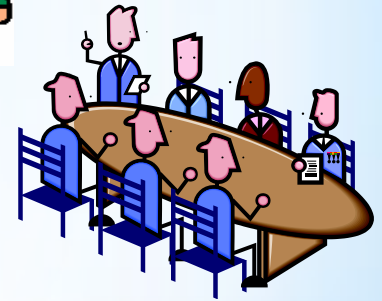
*Key Message

- *The Review proposes a fundamental change in approach to the governance, funding and focus of the Disability Services Programme, with the migration from an approach that is predominantly centred on group-based service delivery towards a model of person-centred and individually chosen supports.



*Inputs to the Review

- * Public consultation;
- * NDA consultation with stakeholders;
- * Report of Expert Reference Group on policy;
- * NDA research on international best practice;
- * Outcomes questionnaire to service providers;
- * Data questionnaire to Service providers;
- * Data from Service Level Arrangements & HSE Finance Unit.



*Public Consultation

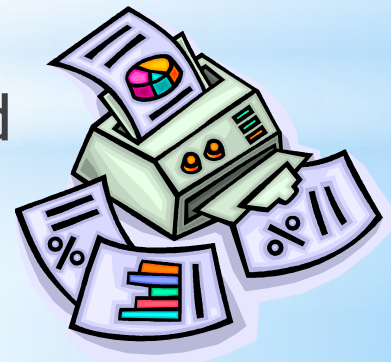
*Public invitation for submissions centred around four key themes:

- Objectives;
- Efficiency;
- Effectiveness;
- Funding.



*200 submissions received;

*Statistical data analysed and report published on 3rd December 2010, in conjunction with initial Summary of Key Policy Themes;



*Public Consultation

continued

Key Messages.....



- * People with disabilities want the same things as everyone else:
 - to live a normal life doing normal things;
 - more choice, control, and independence;
 - more flexible person centred services;
 - inclusion in mainstream society.



*Key Findings

*In the past we focused on inputs, outputs and global costs.



*In the future we will focus on outcomes and individual costs.



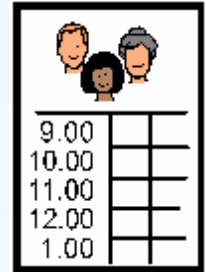
*Challenges

- *Capacity of the system to implement the recommendations;
- *Need to increase efficiency of current system pending change to new model;
- *Implementation of standard assessment method for services and needs;
- *Change-over to provision of services based on identified need and personal choice.

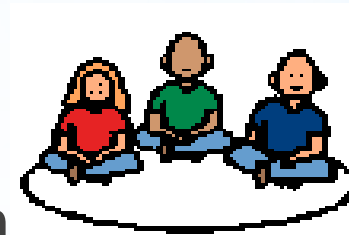


* Opportunities

- * Current financial climate will provide an impetus for innovative solutions;
- * Opportune time to make changes to staff mix and embedded rostering practices;
- * Desire amongst many service users and their families for greater choice, control, independence and social inclusion;
- * Realisation by service providers that the landscape has changed and they must change with it ;
- * Innovative practices already evident on the ground

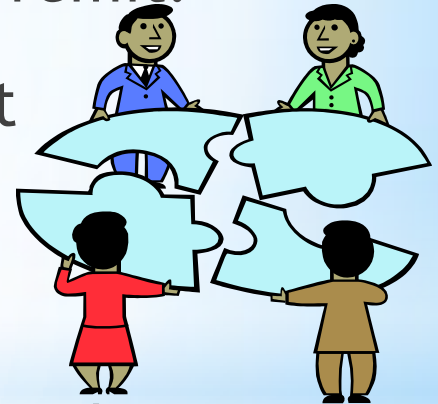


9.00	
10.00	
11.00	
12.00	
1.00	



*Implementation

- * Framework for implementation was published on 28th February;
- * HSE and voluntary agencies have commenced implementing recommendations under their remit.
- * The Immersion Event will make an important contribution to the implementation process.
- * Many demonstration projects are underway.
- * Formal policy appraisal has to be undertaken when the results of the demonstration projects are available.



*Implementation Priorities

*Strengthen national disability function;



*Demonstration projects to drive migration towards person-centred model;



*Commissioning and procurement framework;



*Develop national resource allocation model;

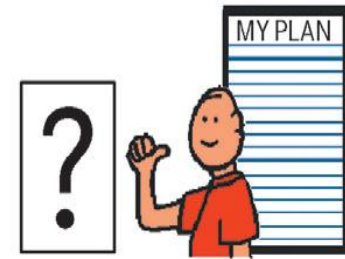


*Establish strategic information requirements.



* Immediate Actions

- * Streamline Service Level Arrangement (SLA) process;
- * Standardise financial reporting;
- * Each agency to examine Value for Money (VFM) Review findings and draw up plans;
- * Introduce unique identifier to support a move to individualised resource allocation and service provision.



*Conclusion

- * Report sets out a clear direction for the development of disability services;
- * Policy direction is in line with the findings of various public consultations and recent HSE reports (Adult Day Services, Congregated Settings);
- * Broad welcome for the policy from people with disabilities and their families, and disability agencies, but some concerns as well.

